

Product Description

HBTD15 is a Bluetooth DALI broadcast dimmer with Zhaga book 18 standard. When paired with a standard DALI2/D4i driver, it allows for precise dimming control and color tuning. With a built-in real-time chip, it ensures uninterrupted timekeeping for up to 2 months during power outages. Additionally, its external Bluetooth antenna design extends the broadcast range for enhanced connectivity. Simple device setup and commissioning can be done via Lena Lighting Clue app.



App Features

- Floorplan feature to simplify project planning
- Grouping luminaires via mesh network
- Scenes
- Push switch configuration
- Schedule to run scenes based on time and date
- Astro timer (sunrise and sunset)
- Device firmware update over-the-air (OTA)
- Power-on status (memory against power loss)
- Offline commissioning
- Different permission levels via authority management
- Network sharing via QR code or keycode
- Remote control via gateway support HBGW01
- Interoperability with Bluetooth product portfolio
- Compatible with EnOcean BLE switches
- Continuous development in progress...

Hardware Features

- Zhaga Book 18 standard
- Bluetooth range extender
- Ability to keep real-time for up to 12 weeks during power loss
- IP65 design
- LED indicator
- 5-year warranty

Bluetooth[®] Kinetic Switch

HBKS01

HBKS02

HBKS03

HBKS01D

HBKS02D

Fully support EnOcean self-powered switch module
PTM215B (HBES01/W & HBES01/B)

EnOcean
Self-powered IoT

LENA LIGHTING | **Clue**

Smartphone app for both
iOS & Android platform

Web app/platform:
www.iot.koolmesh.com

Technical Specifications

Bluetooth Transceiver	
Operation frequency	2.4 GHz -2.483GHz
Transmission power	4 dBm
Range (Typical indoor) Max.	100m
Protocol	Bluetooth 5.0 SIG Mesh

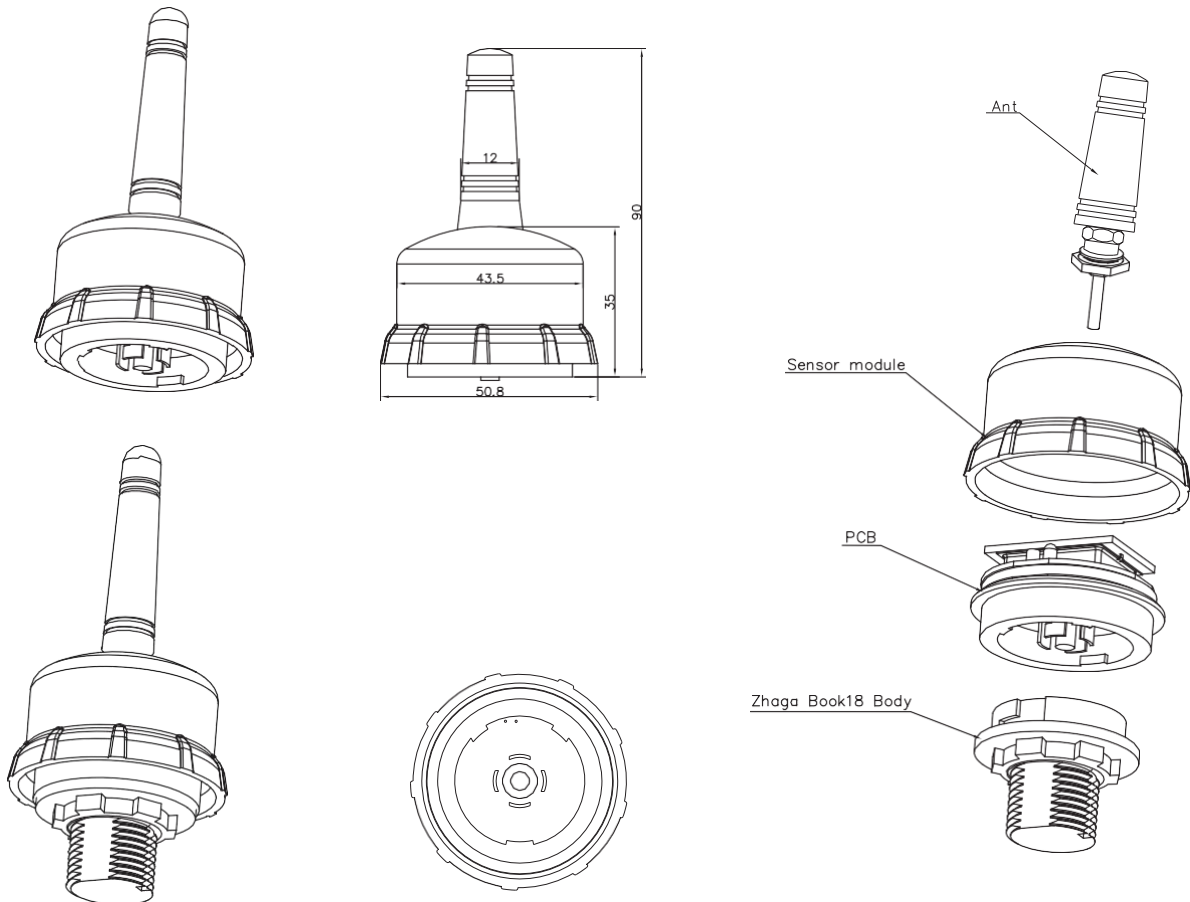
Input & Output Characteristics	
Operating voltage	12-36V
DALI Input voltage	9.5-22.5V
Standby current	2mA
Lux range	0~1000lux

Environment	
Operation temperature	Ta: -20°C ~ +50°C
Storage temperature	-35°C ~ +55°C
Relative humidity	20 ~ 90%
IP rating	IP65
Insulation	Class II

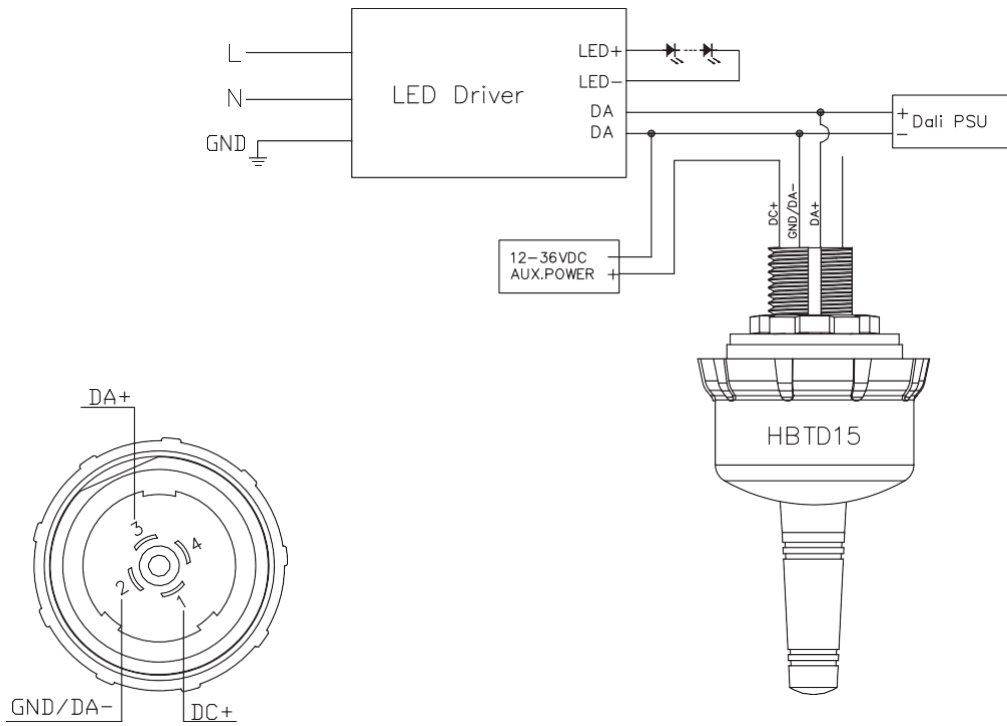
Safety & EMC	
EMC standard (EMC)	EN55015, EN61547 EN61000-3-2/-3-3
Safety standard (LVD)	EN 61347-1, EN 61347-2-11, EN62493
RED	EN300328, EN301489-1 EN301489-17, EN50663
Certification	CE, UKCA, RCM

Mechanical Structure & Dimensions (Unit: mm)

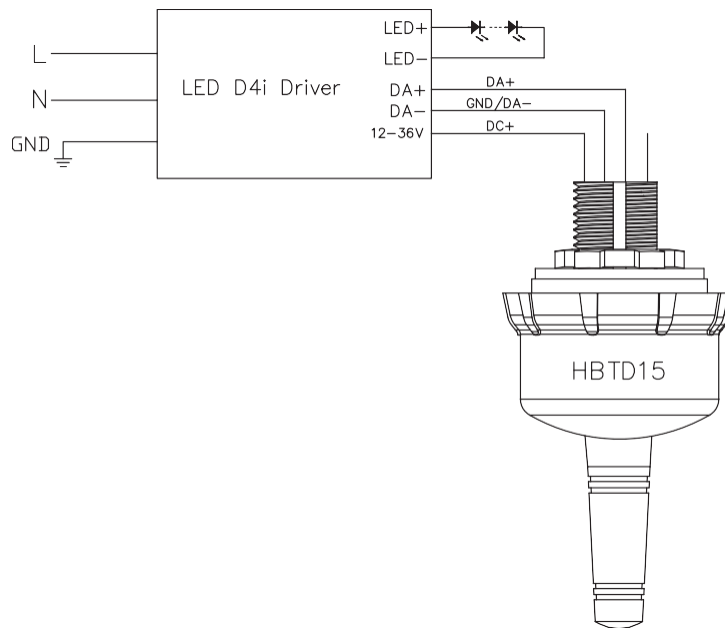
For some special Applications, customers may need a larger Bluetooth transmission for both smartphone to device and device to device. Thanks to the reinforced Bluetooth antenna, when there is a stable connection between two HBTD15s, the transmission distance (smartphone to devices) enlarges to 30m, the distance of device to device can reach 100m Max.



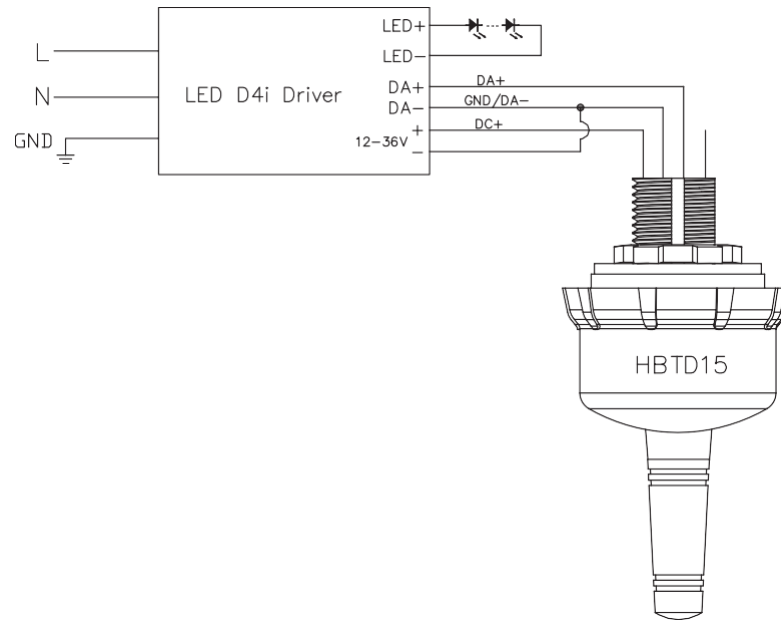
Wiring Diagram 1



Wiring Diagram 2



Wiring Diagram 3



For more information, contact iot@lenalighting.pl